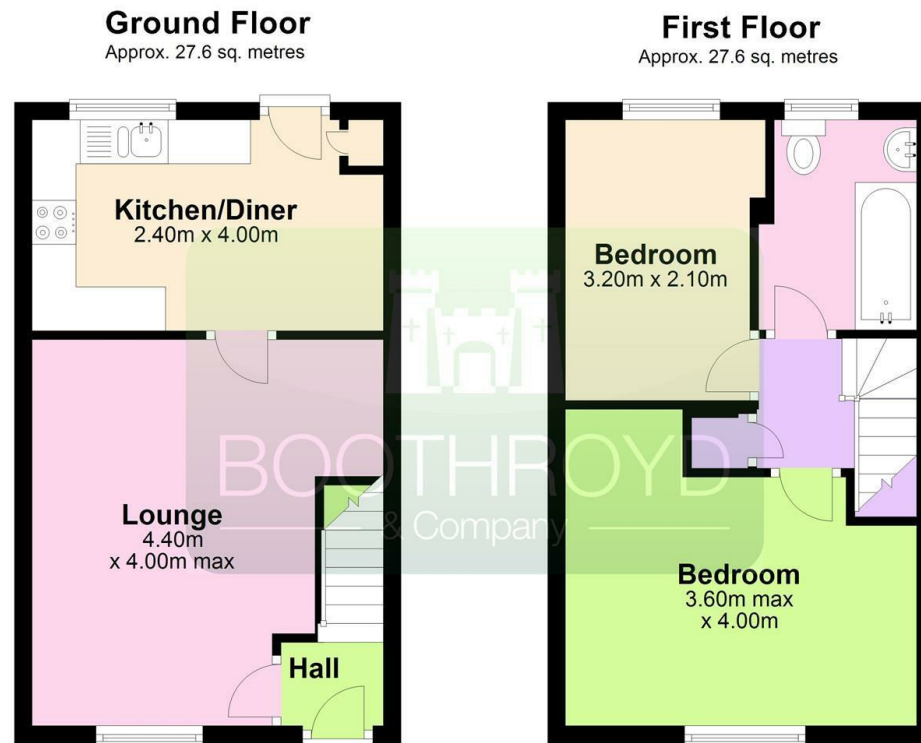




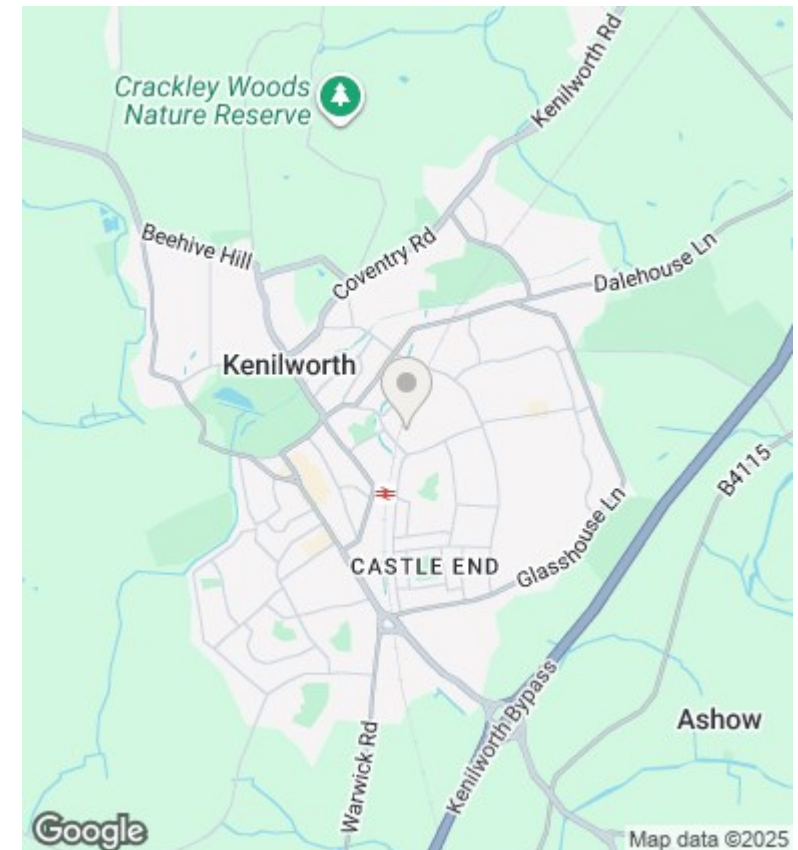
27 Cherry Orchard, Kenilworth, CV8 2SZ

£1,150 Per Calendar Month

- Refurbished Two Bedroom Semi Detached House
- EPC Rating C - 70
- Bedroom One With Built In Wardrobes
- Warwick District Council Tax Band C
- Recently Refitted Shaker Style Kitchen With Appliances
- Parking For Two Cars
- Attractive Position Within Cul-De-Sac
- Fully Tiled Refitted Bathroom With Shower
- Gas Central Heating And Double Glazing
- Available 28th November 2025



Total area: approx. 55.2 sq. metres



Directions

Viewings

Viewings by arrangement only. Call 01926 857244 to make an appointment.

Council Tax Band

C

EPC Rating:

C

Energy Efficiency Rating		
	Current	Potential
Very energy efficient - lower running costs		
(92 plus) A		
(81-91) B		86
(69-80) C	70	
(55-68) D		
(39-54) E		
(21-38) F		
(1-20) G		
Not energy efficient - higher running costs		
England & Wales		EU Directive 2002/91/EC